

## Base Disassembly/Swivel Replacement L90 Style Base

**Tools needed: 7/16" socket and ratchet, 7/16" wrench, 9/16" socket, 9/16" wrench.**

1.



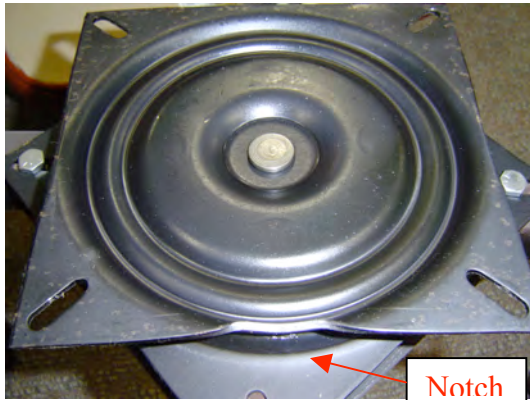
Lay chair upside down on a clean, smooth surface. Rotate chair base to expose the (4) hex head 7/16" bolts that secure the swivel to the chair seat. Remove these (4) bolts.

2.



Remove the (4) 7/16" bolts and hex nuts that bolt through the bottom side of the swivel, top base plate, square tubular leg frame, top base plate, square tubular leg frame, and lower base plate.

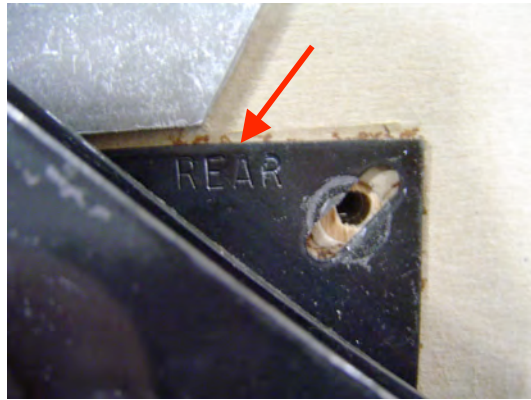
3.



Reinstall swivel to base plates and square tubular leg frame. Note that the side of the swivel with the notch must face opposite from the legs.

9/2007

4.



Reposition the assembled base to the bottom of the chair seat. Note that the stamped "REAR" in the swivel must face to the rear of the chair seat. Reinstall the (4) 7/16" hex head bolts and tighten securely.